

# Year 2

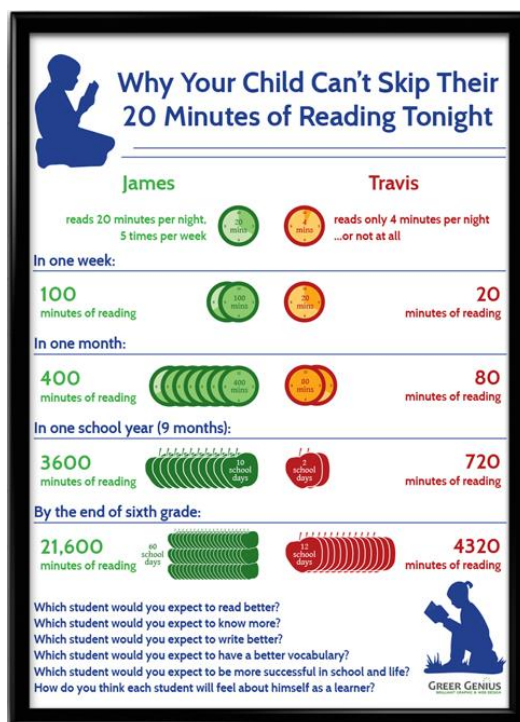
Dear Parents,

Welcome to the new school year, I look forward to meeting you throughout the year. My aim throughout the year is to work with the student to foster a love of learning and to lead them to become responsible active learners as members of St Bede's School community.

The following information highlights the basis of the programmed activities for Year Two throughout the term.

## General Information

- Homework – Term 1 (Commences Week 3 - Due **fortnightly** on odd week **Fridays e.g. a fortnights homework will be sent home Monday Week 3, then students return it Friday week 4**).
  - **Reading:** Personal Reading Monday to Thursday.
  - **Spelling Words:** Look, Cover, Write and Check (L.C.W.C) Monday, Tuesday, Wednesday and Thursday from a word list provided to your child.
  - **Spelling Grid:** Each week students should choose one activity from the Spelling Grid. They can write or draw the task. Alternatively, students can take a photo and add it in their homework book. After each task students can colour in the activity detailed in the grid when completed.
  - **Maths Grid:** Each week students should choose one activity from the Maths Grid. They can write or draw the task. Alternatively, students can take a photo and add it in their homework book. After each task students can colour in the activity detailed in the grid when completed.



- Communication: Classroom teachers are the best first point of contact for classroom and learning issues. Should you need to speak to me about any concerns I am more than happy to do this, as communication is key to our school and home partnership. Some discussions need time and my full attention, to this end I do ask that you make a time to meet with me or phone me (a message can be left with Mrs Wells and I will return your call as soon as possible). Conversations are difficult to have at line up time or as we are going into class. For some **less urgent and less serious** issues email may be an option: [Levi.Heffernan@cg.catholic.edu.au](mailto:Levi.Heffernan@cg.catholic.edu.au). Email responses will be on weekdays. Please allow 24 hours for a response to emails.
- Whole School Focus: This year we will be exploring our school motto, "Be The Light". How can we make connections between light as faith and light as mission?
- Assemblies: Focus Assemblies will be on a Monday afternoon at 2:45 pm and Showcase Assemblies on a Fridays at 12:30 pm, as scheduled. Parents and families are very much invited to come along.
- Library borrowing – Monday 12:00 to 1:00 pm.
- Sport days – all infants classes will engage in physical activities on Tuesdays and Fridays. Please note that we will be participating in two clinics this term to supplement programmed Gross Motor/Perceptual Motor Program activities on Fridays. There will be a Hockey clinic on Wednesday, 19<sup>th</sup> February 2020 in Week 3, as well as a Soccer clinic on Wednesdays Weeks 6 – 10.

## Overview of Learning for Term 1

### **Religious Education**

- Students will investigate the Bible as a collection of stories.
- Year Two will also look into the history of the church and how it has evolved over time.

### **English**

- This term Year Two will investigate texts that **recount**.
- Grammar focuses on revision of capital letters and full stops. There will be an emphasis on language features such as adjectives, nouns and verbs throughout the year.
- Handwriting will involve revision of upward and downstroke letter formation and exposure.
- Reading is a daily occurrence. Students will develop their ability to read for a sustained period (I read). Reading episodes will be followed by reading response group activities (we read). Each term students will be exposed to a class text (you read). Students will also continue developing reading strategies such as decoding unknown words, sounding out and reading ahead.
- Speaking and listening opportunities will involve students developing skills to give and receive peer feedback, interacting and turn taking in whole class situations, as well as communication in small groups.

### **Mathematics**

#### All About Us:

- This term Year Two will integrate data representation and interpretation with a literacy focus of texts that inquire through surveys and questionnaires.
- Year Two will be using authentic situations to collect, display and interpret a range of data.
- We will also create a range of data displays and interpret information gathered and displayed by their peers.
- Students will develop an understanding of the elements of a good question and the purpose for collecting data.

#### Operating with Whole Number:

- Students will develop their understanding of mental computation strategies for addition and subtraction.
- Year Two will develop their ability to make links between addition and subtraction and describe number patterns based on either process.
- We will also recognise multiplication as repeated addition and division as the sharing of objects.

#### Shapes in My Environment:

- This term Year Two will name, identify and describe the features of three-dimensional objects.
- We will also identify two-dimensional shapes on the surfaces of three-dimensional objects and use this to draw and create three-dimensional models.
- Students will focus on investigating the mass of a variety of three-dimensional objects and will record data collected in lists and tables to communicate their findings.

### **HASS (Humanities and Social Sciences)**

#### History:

- This term we will look at past and present objects, people, places and events
- We will learn to sequence familiar objects and events
- Students will sort and record information and data, including location, in tables and on plans and labelled maps.
- Year Two will present, past and future are signified by terms indicating time, as well as by dates and changes that may have personal significance, such as birthdays, celebrations and seasons

### **Science**

- Students will investigate living things grow, change and have offspring similar to themselves.
- Additionally, we will participate in guided investigations to explore and answer questions

### **The Arts**

#### Visual Arts:

- This term Year Two will look at expressing themselves artistically through exploring self-portraits, pictorial representations of family and drawing characters from known stories.
- We will also look at sketching the different features within students' community.
- Art activities will also focus on supporting community celebrations such as Ash Wednesday and Easter to integrate learning in meaningful ways.

Drama (Mrs Robinson-Siljeg Wednesdays):

- This will involve participating in role play situations to act out components of bible stories.
- Year Two will also learn and develop a repertoire of self-guided warm-up exercises.
- We will explore concepts of mime and dramatic action/expression.
- Also, students will be introduced to improvisation.

**PDHPE**

PD/H (Mrs Robinson-Siljeg Wednesdays):

- Students will practise strategies to use when they feel uncomfortable, unsafe or need help with a task, problem or situation.
- Year Two will also learn about contributing to healthy and active communities.
- Additionally, we will explore actions that help make the classroom a healthy, safe and active place.
- We will integrate learning about identifying and exploring natural and built environments in the local community where physical activity can take place.

Sport/PE:

- Students will participate in a Hockey clinic in Week 3 and a Soccer clinic Weeks 6 – 10. These clinics will support skills development of teamwork and ball skills e.g. kicking, pushing, shotted etc.
- Year Two will also participate in a Gross Motor/Perceptual Motor Program on Fridays.

**iPads and Digital Technologies**

- This term Year Two will predominately engage with technologies through stimulus resources when integrating areas such as Mathematics, English, The Arts, History etc.
- We will identify how people design and produce familiar products, services and environments and consider sustainability to meet personal and local community needs.
- Students will engage with design and technologies processes and production skills.
- We will also generate, develop and record design ideas through describing, drawing and modelling.
- Additionally, students will use materials, components, tools, equipment and techniques to safely make designed solutions.

**Events this Term**

11 February 2020 – Parent Information Night (6:00pm)  
13 February 2020 – Opening School Mass (12:00pm)  
17 February 2020 – Year Two Focus Assembly (2:45 pm)  
18 February 2020 – Swimming Carnival  
26 February 2020 – Ash Wednesday Mass 12:00 pm  
10-12 March 2020 –Parent/Teacher meetings  
30 March 2020 – School photos  
09 April 2020 – Stations of the Cross

**Special messages for the term**

Please note that there will be no Maths or Spelling homework required in Week 7 as this is Sabbatical Week. Your child should still be encouraged to read daily in Sabbatical Week to maintain the progress they are making.

Regards

Levi Heffernan  
Year 2 Classroom Teacher  
St. Bede's Primary School  
11 February 2020